

The Rural Health Initiative: Advancing Pharmacist Care for Rural Communities in Washington

Angela Stewart, PharmD, BCPS, FWSPA; Professor and Associate Dean of Rural Health



WASHINGTON STATE UNIVERSITY
**College of Pharmacy and
Pharmaceutical Sciences**

RURAL HEALTH INITIATIVE

Objectives:

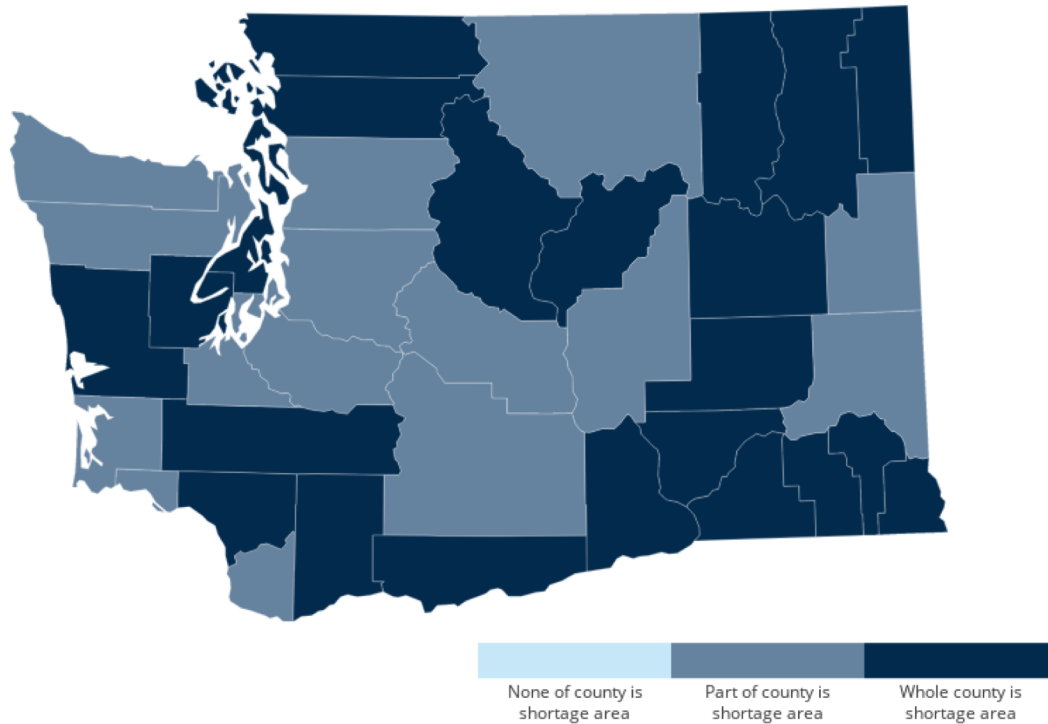
At the completion of this program, the participant will be able to:

- Describe how pharmacists as primary care providers can advance and sustain health care in rural communities
 - Identify pathways into pharmacy and health science education for students from rural communities
 - Recognize specialized knowledge and skills rural providers must have to meet the needs of their patients
 - Discuss opportunities for development of academic-industry partnerships to support education and practice advancement
-

The Problem

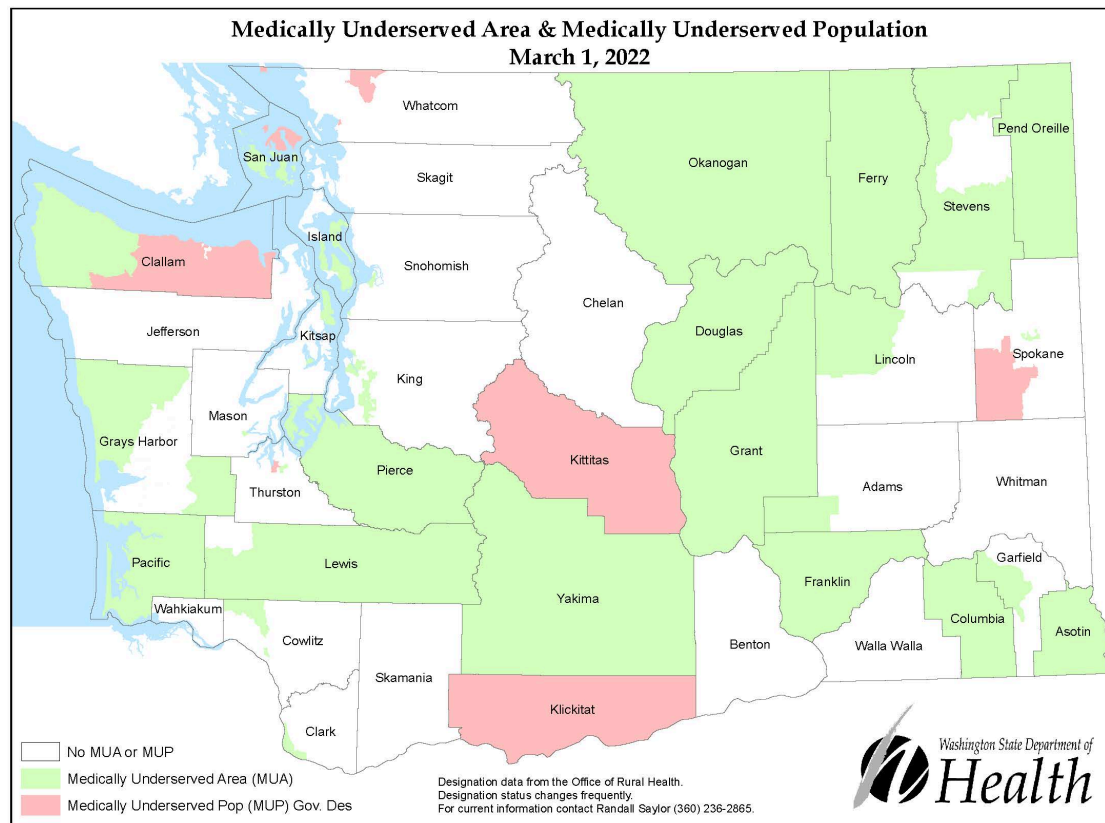
HPSA: Primary Care

Health Professional Shortage Areas: Primary Care, by County, 2022 - Washington



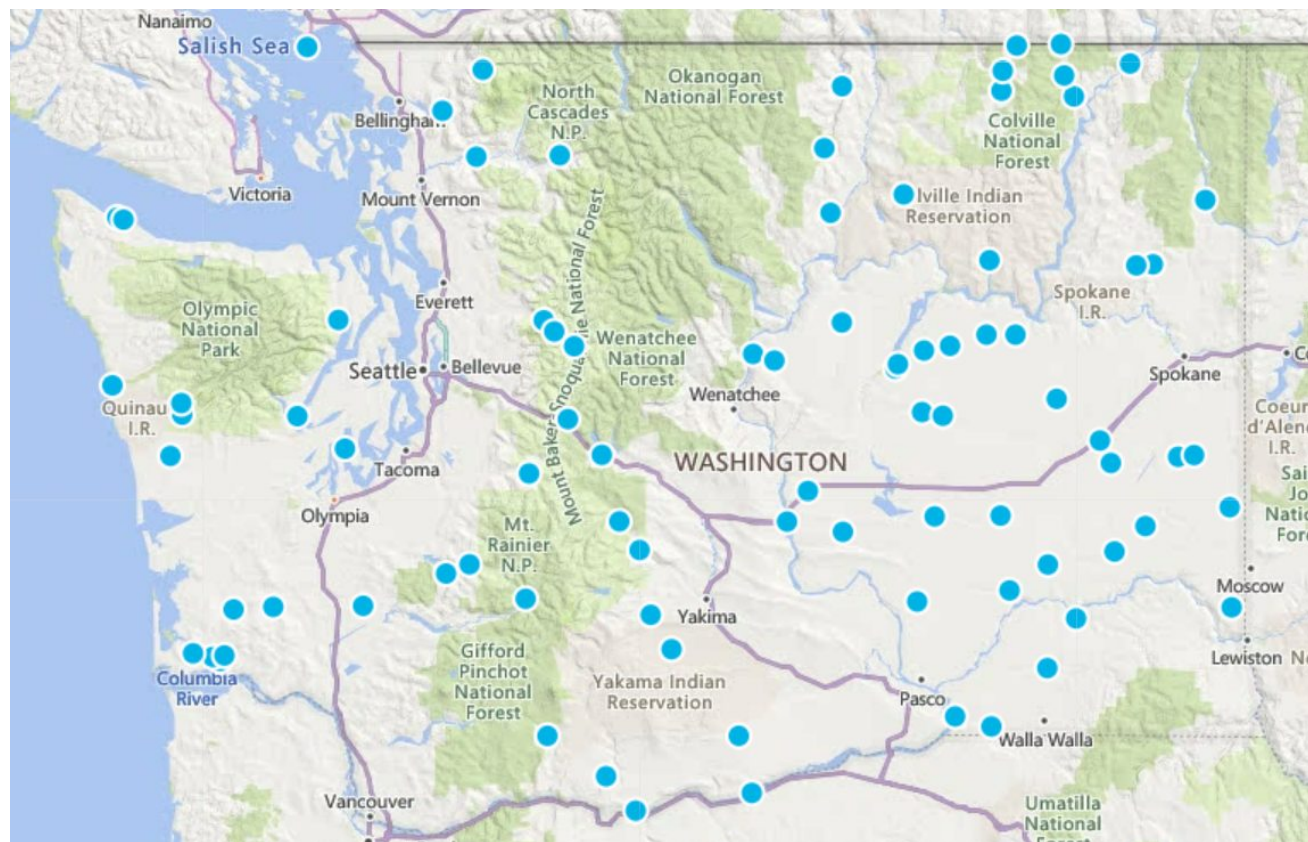
The Problem

Medically Underserved Area/Population



The Problem

Pharmacy Deserts



The Problem

Access to Healthcare in Rural Washington

The nearly 800,000 rural Washingtonians struggle to access healthcare

An estimated 600 new providers needed to eliminate this gap

How do we meet this need?

Medication Therapy Experts

Pharmacy Patient Care Services

Prescription services

Immunizations

Preventative care services

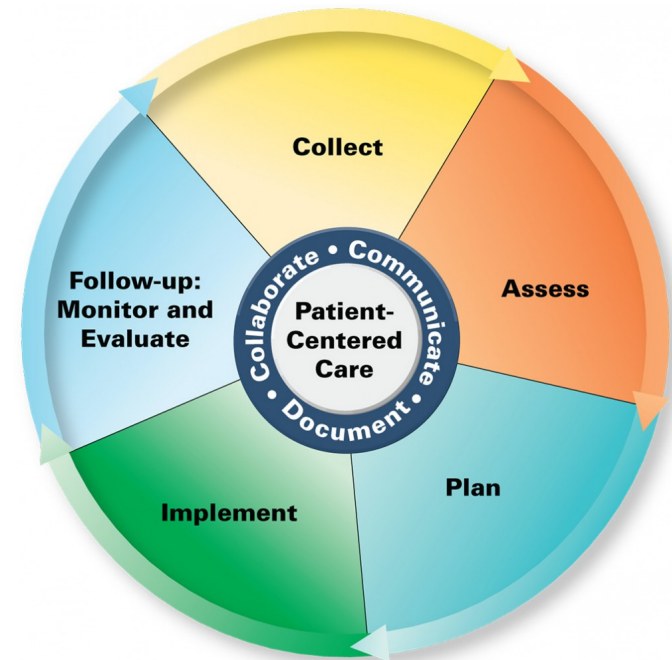
Wellness screenings

Collaborative care services

Medication therapy management

Chronic disease management

Ensuring follow-up and access to healthcare resources



Let's Hear From You!

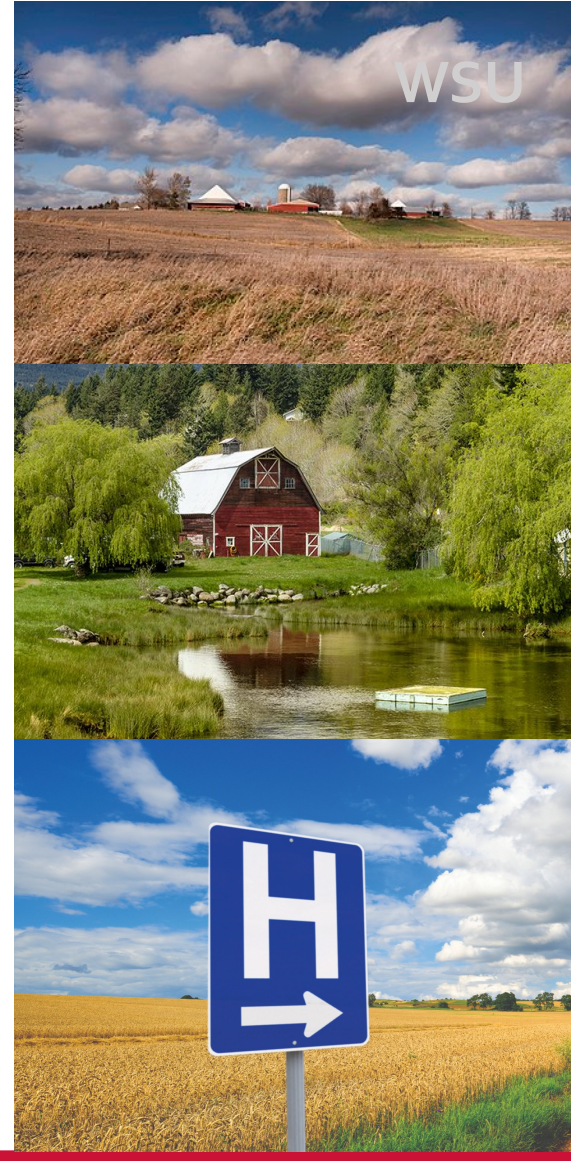


RURAL HEALTH INITIATIVE

Purpose

Increase access to quality healthcare in rural Washington

1. Create a pathways to health science education
2. Provide specialized training in rural healthcare
3. Advance pharmacy practice in rural communities

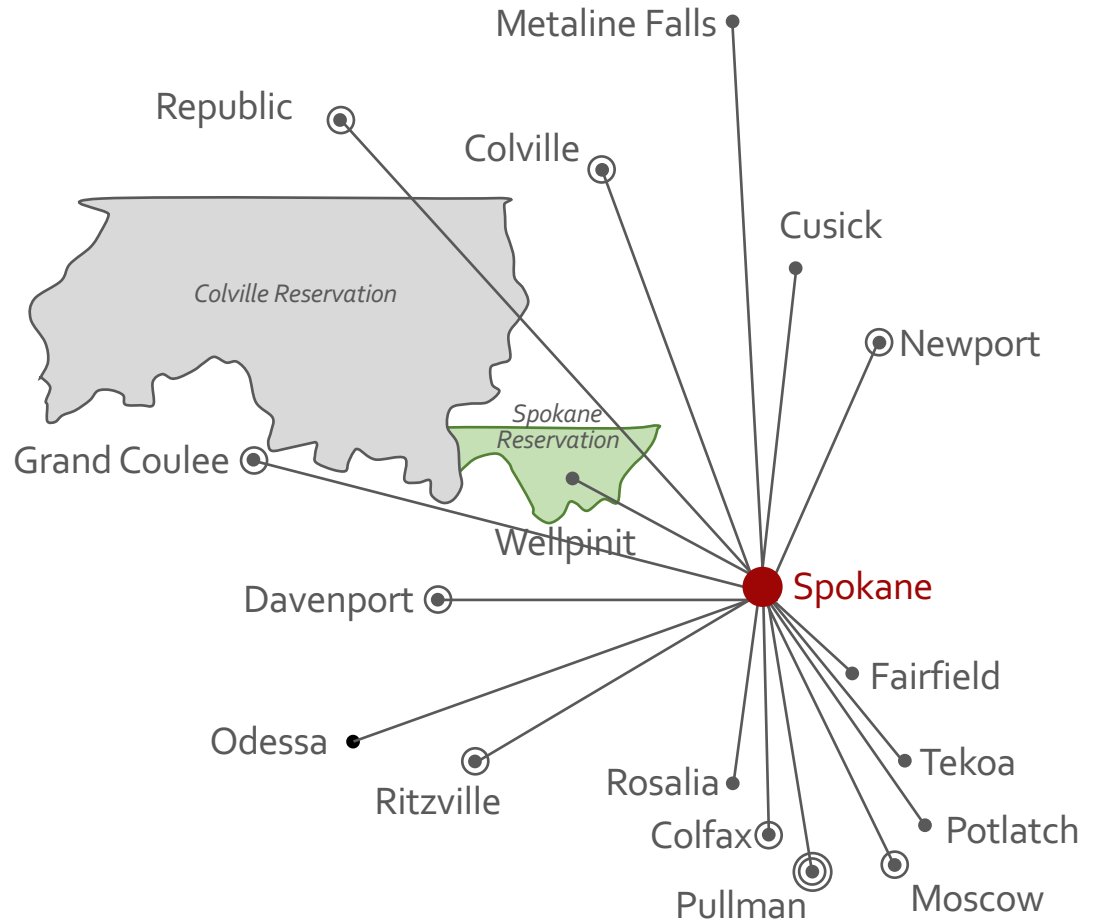


SERVING THE UNDERSERVED

WSU

Eastern Washington

- Critical Access Hospital + Residency Site
- Critical Access Hospital
- No Critical Access Hospital



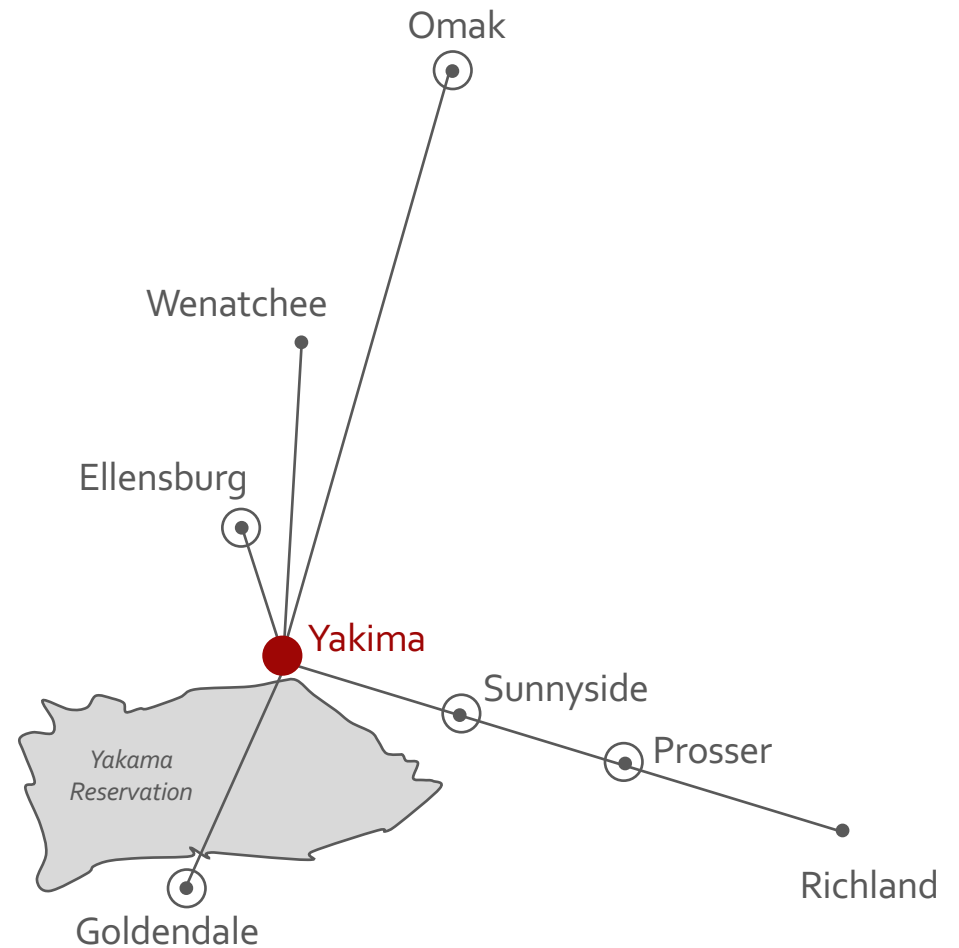
SERVING THE UNDERSERVED

Central Washington

- Critical Access Hospital
- No Critical Access Hospital



WSU



CREATING A PATHWAY TO THE HEALTH SCIENCES

Rural health track



PRE-
MATRICULATION



CURRICULAR
PROGRAMS



POST-GRADUATE
TRAINING

How to become a pharmacist

Traditional

- 4 yrs pre-pharmacy study
 - BS in a science field
- 3-4 yrs pharmacy school
 - Doctor of Pharmacy Degree
- Pharmacist Licensure Exam and State Board Requirements
 - NAPLEX
 - MPJE
- Optional post-graduate residency
- Optional specialty board certification

Alternate Pathways

- Pharmacy assistant
 - Start in high school
- Certified pharmacy technician
 - Gain valuable work experience
- Associate in Science – transfer degree
 - Complete pre-requisite courses
- Save-a-Seat & Early admissions options
- Complete the doctor of pharmacy degree at a local extension campus

RHI Curriculum

1. Specialized, elective course work (5-8 credits)

- Current Affairs and Opportunities in Rural Health – 2 credits
- Electives covering topics relevant to rural health (within and outside CPPS) – 3 - 6 credits

2. Capstone course (2 - 4 credits)

- Longitudinal special project in rural health (starts with IPPE)
- 1 credit awarded/semester to a maximum of 4 credits
- Faculty or community mentor
- Present results at a regional or national meeting, develop a manuscript for publication

3. IPPE and APPE rotations

- Rural sites or sites prioritizing needs of medically underserved populations
- Utilize multiple "home" zones across the state

4. Interprofessional service and learning experiences in rural communities

5. Unique mentoring program utilizing faculty, alumni, and community partners with rural Rx experience

CREATING A PATHWAY TO THE HEALTH SCIENCES

Interprofessional education opportunity

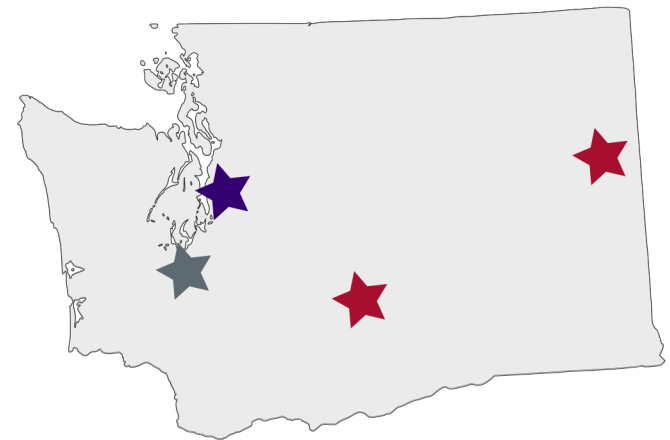


BEHAVIORAL HEALTH SAFETY NET

Targeted training of pharmacy residents and student pharmacists

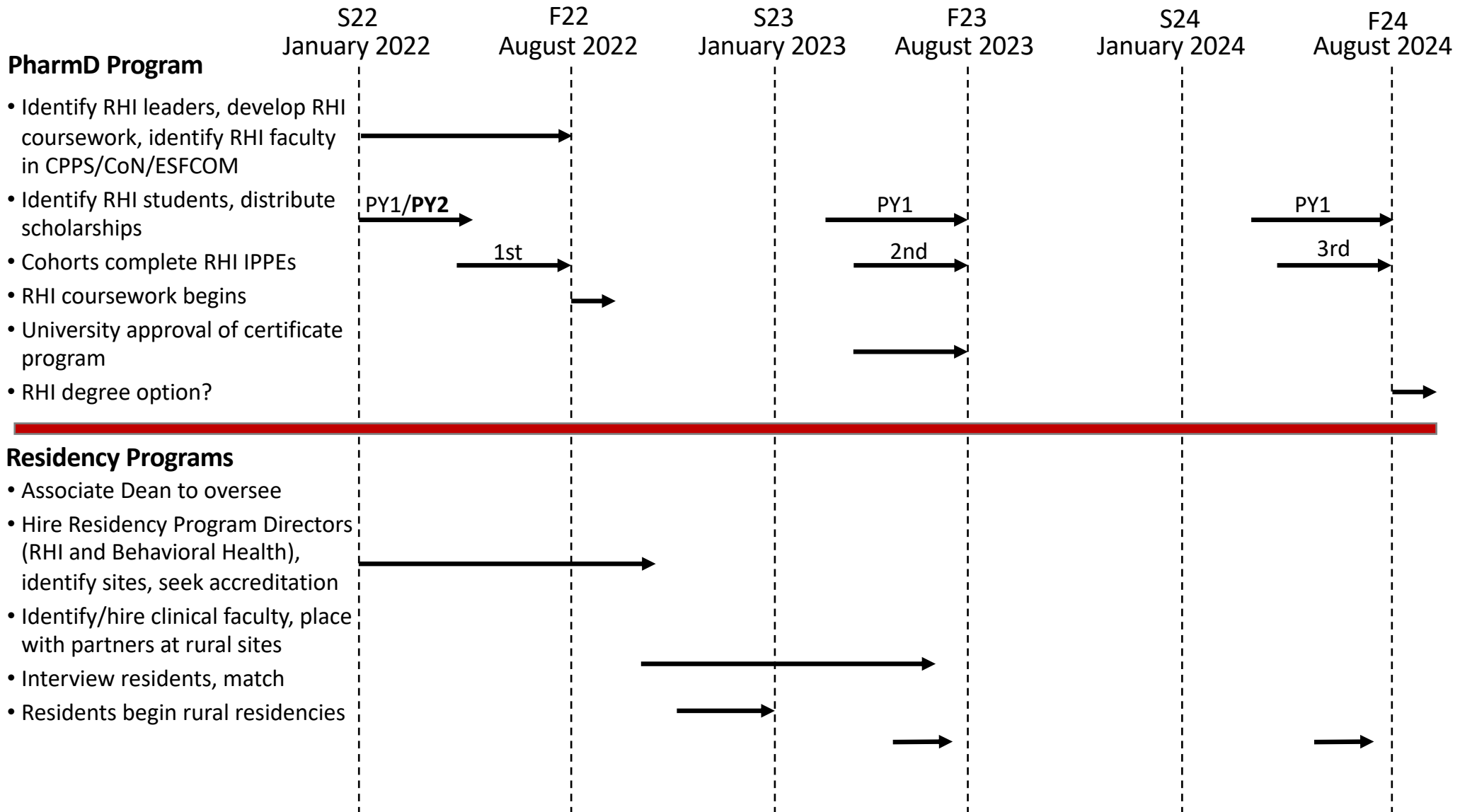
UW SOP — WSU CPPS — WSPA

- Two clinical faculty members in behavioral health
- Four post-graduate residency slots
- UW – WSU curricular integration in behavioral health



Let's Hear From You!





Partnering with our Pharmacy Community



We Want to Hear From You!

- What challenges are you facing, and solutions are you exploring related to improving access to pharmacy care?
 - Past successes?
 - Past challenges?
 - New endeavors?
 - Dreams/goals?

